

A decorative border of white flowers and green leaves is scattered around the edges of the parchment paper, set against a dark wood background.

shree **GANAPATI** ENCLAVE

LIFE IN EVERY MOMENT !



Life in every moment

How about a space that celebrates life in every moment. Where Nature comes in full circle- Joy is in the air, Green environ and comfort a habit. Cozy and complete. Affordable, yet luxurious. Shree Ganpati Enclave provides the best of the world at your home.

25 COZY APARTMENTS OFF GS ROAD, GUWAHATI.



ARTIST'S IMPRESSION

Not just a home, a complete comfort zone.

65* open space is where the symphony of your thoughts and that of the wind rises to a melody called life. A life where every memory is worth recalling, full of harmonious notes, and filled with the music of laughter. When the nature is a neighbour, happiness is natural.

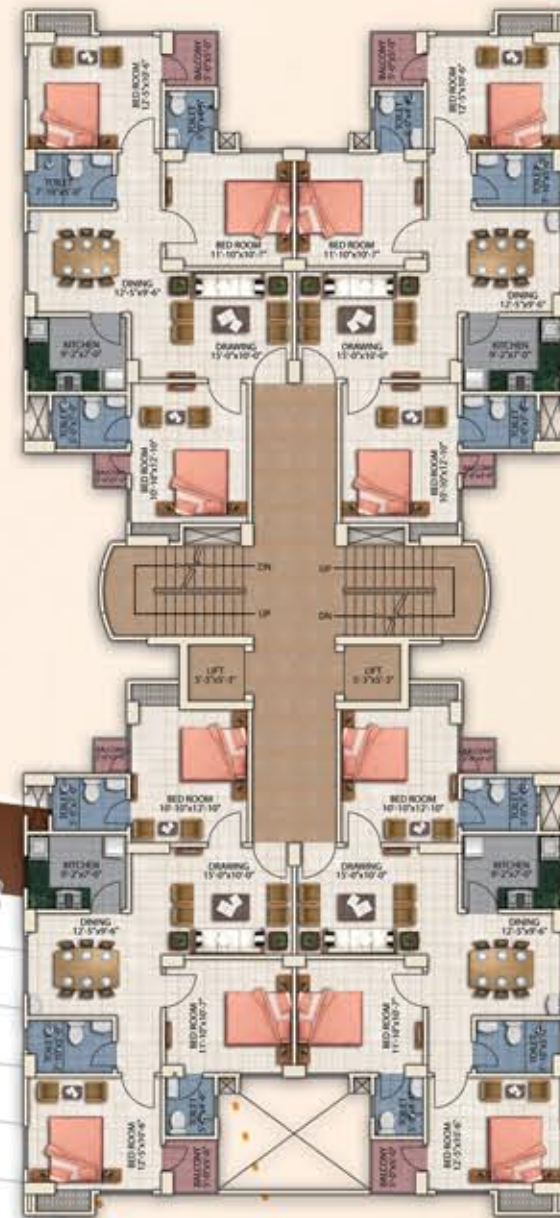


FLOOR PLANS



FLAT A S.B.A - 1205 SQFT | BHK - 3
 FLAT B S.B.A - 1205 SQFT | BHK - 3
 FLAT C S.B.A - 1205 SQFT | BHK - 3
 FLAT D S.B.A - 1205 SQFT | BHK - 3

1ST FLOOR PLAN



FLAT A S.B.A - 1244 SQFT | BHK - 3
 FLAT B S.B.A - 1244 SQFT | BHK - 3
 FLAT C S.B.A - 1244 SQFT | BHK - 3
 FLAT D S.B.A - 1244 SQFT | BHK - 3

TYPICAL 2ND & 4TH FLOOR PLAN



FLAT A S.B.A - 1231 SQFT | BHK - 3
 FLAT B S.B.A - 1231 SQFT | BHK - 3
 FLAT C S.B.A - 1231 SQFT | BHK - 3
 FLAT D S.B.A - 1231 SQFT | BHK - 3

TYPICAL 3RD & 5TH FLOOR PLAN



FLAT A S.B.A - 1758 SQFT | BHK - 3
 FLAT B S.B.A - 1845 SQFT | BHK - 3

6TH FLOOR PLAN

FLOOR PLANS

FLOOR PLANS



FLAT A S.B.A - 1571 SQFT | BHK - 3
FLAT B S.B.A - 1406 SQFT | BHK - 3

7TH FLOOR PLAN

FLAT A S.B.A - 1368 SQFT | BHK - 3

8TH FLOOR PLAN



3D VIEW



S.B.A - 1205 SQFT | BHK - 3

1ST FLOOR PLAN

S.B.A - 1244 SQFT | BHK - 3

TYPICAL 2ND & 4TH FLOOR PLAN



3D VIEW



3D VIEW





3D VIEW

S.B.A - 1368 SQFT | BHK - 3

8TH FLOOR PLAN

FLAT B S.B.A - 1571 SQFT | BHK - 3

7TH FLOOR PLAN

SITE PLAN



ONGOING PROJECT



SHREE KRISHNA ENCLAVE
Lokhra Road, Jyotikuchi.

UPCOMING PROJECTS

Dispur, Lakhimi nagar.

Kharghuli, Joypur.

Panjabari Road, Jilika Path.

SPECIFICATIONS

STRUCTURE

RCC frame with earth quake resistant structure (considering earth quake Zone-V).

OPEN SPACE

65% Sides with landscaping.

WALLS

Bricks nogged walls.

DOORS

Panel wooden door for main gate
Flush doors for all others rooms.

WINDOWS

Anodized Aluminum sliding windows.

TOILET

Level ceramic tiles on walls and antiskid flooring tiles. CP fittings Jaguar / Crabtree, equivalent continental.

Sanitary: Jaquar / Hindware / Parryware equivalent provision of exhaust fan.

KITCHEN

Granite Top cooking platform with one stainless steel sink and ceramic tiles up to 600mm above platform with provision of exhaust fan.

ELECTRICALS

Concealed electrical wiring (I.S.I. mark cables)
Havells / Finolex / Polycab equivalent modular switches-Philips / M.K / Legrand / Schneider or equivalent.

PAINTING

Interior walls with P.O.P finished painting.

FLOOR

Vitrified tiles flooring inside the flats and Marble in staircases and common areas.

WATER

Adequate underground water storage with deep tube well and central iron removal plant.

CAR PARKING

Parking at ground floor.

FIRE FIGHTING

Provision for fire fighting in building as per fire dept. rules.

ELEVATOR

Two nos. elevator make Otis / Kone / Sindner or equivalent.

ELEVATION

Superior front elevation with high look, uniquely finished with exterior emulsion paint to with stand all weather condition.

OTHER'S

Bike / Cycle parking at ground floor, common Bathroom / Toilet at ground floor / TV points & Telephone points and provision of split A.C.

EXTRA CHARGES

Transformer and electricity load security.

Power Backup: Silent generator for common light elevator & water pump.

ASEB meter cost and installation charges.

Sale tax / Vat, Service Tax or any other taxes and octroi levied by central / state govt.

Stamp duty, registration charges, advocates fees and any other legal charges.

GMC holding charges.

NOTE Any additional facilities could be provided on flat owners request at an extra cost viz interior design & decoration such as wardrobe, false ceiling, extra ordinary fittings & fixtures.

MODE OF PAYMENT

On booking

On execution of agreement

1st installment on completion of foundation

2nd Installment on completion of 2nd slab

3rd Installment on completion of 3rd slab

4th Installment on completion of 4rd slab

5th Installment on completion of 6th Slab

6th Installment on completion of 8th slab

7th Installment on completion of brickwork

8th & Final installment on

(possession / registration which ever is earlier) :

CASH DOWN PLAN (A discount of 7% on total cost of flat)

Booking amount

Execution of legal document

1st Installment

Final Installment

Penalty charges in delay of payment.

10% of total value of the flat

20% of total value of the flat

10% of total value of the flat

10% of total value of the flat

10% of total value of the flat

10% of total value of the flat

10% of total value of the flat

10% of total value of the flat

5% of total value of the flat

5% of total value of the flat

5% of total value of the flat

5% of total value of the flat

5% of total value of the flat

10% of the total value of flat

20% of the total value of flat

65% of the total value of flat

(Within 45 days of booking)

5% of the total value of flat



THE IMPORTANT LANDMARK ADJACENT TO SHREE GANPATI ENCLAVE WITHIN A RADIUS OF ONE KILOMETER.

HEALTH CARE CENTERS

GNRC, Good health, Dispur Polyclinic Hospital, Downtown, Ayursundra, Dispur hospital.

EDUCATIONAL INSTITUTION

Shreemanta Sankar Academy, Shamrock Play School, Anand Academy high School, Govt. Higher Secondary School, Gopal Bora Higher Secondary School.

MARKET

Super Market and Ganesh Guri Bazar.

COMMUNICATION

The main nerve of Guwahati, G.S. Road is hardly a minute walking distance having a bus stop and auto stand where from one can move any where to Guwahati.

DEVELOPERS



M/S SHREE BUILDERS

Shree Nagar Bye Lane no - 5
Nalini Bala Devi Path, H/N - 27
Guwahati 781005
Mob 9854043555 / 9707478075

ARCHITECT

M/S CREATION
ANJAY GUPTA
PINIKI BHATTACHARJEE

DISCLAIMER

All details in this booklet are for easy information and concept purposes only, and do not form part of the agreement. This document is tentative and developers reserve the right to make variations and modification.